

## Product datasheet

### RETINOL BINDING PROTEIN 4 CHICKEN POLYCLONAL ANTIBODY

**SKU:** MM-0250-P

100 µg

#### OVERVIEW

**Clonality:**

Polyclonal

**Host:**

Chicken

**Target:**

Retinol binding protein 4

**Clone ID:**

---

**Preservative:**

Ampicillin and streptomycin, 0.05% sodium aside.

**Format:**

Lyophilized purified total IgY in PBS pH7.4

**Recommend starting dilution:**

Reconstitute with deionized water. Optimal dilution has to be determined by the user.

**Limitations:**

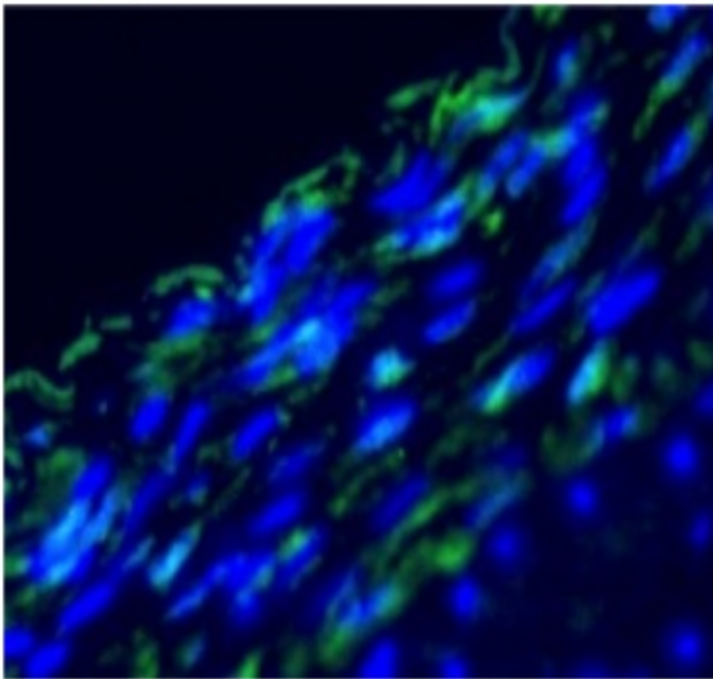
Research Use Only

**References:**

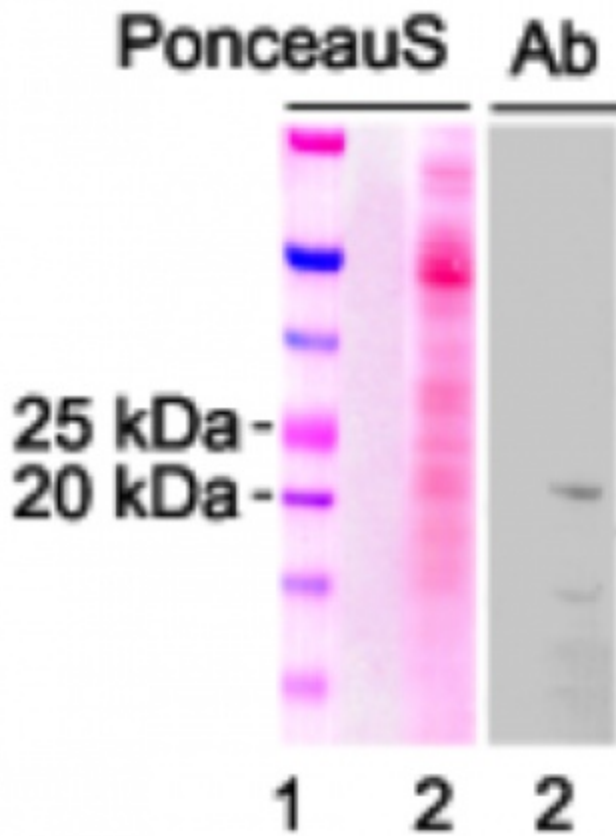
**Storage:**

Lyophilized antibodies can be kept at 4°C for up to 3 months and should be kept at -20°C for long-term storage (2 years). To avoid freeze-thaw cycles, reconstituted antibodies should be aliquoted before freezing for long-term (1 year) storage (-80°C) or kept at 4°C for short-term usage (2 months). For maximum recovery of product, centrifuge the original vial prior to removing the cap. Further dilutions can be made with the assay buffer. After the maximum long-term storage period (2 years lyophilized or 1 year reconstituted) antibodies should be tested in your assay with a standard sample to verify if you have noticed any decrease in their efficacy.

Image:



Immunofluorescence. Parafin embedded pig coronary artery tissue section was stained for RBP4 presence with the anti chicken IgY and the reaction was visualized with anti chicken antibody (green). DNA was stained with DAPI (blue).



Western Blot. Artery tissue lysate was electrophoretically separated and transferred to a nitrocellulose membrane that was stained for proteins with Ponceau S and with the chicken antibody to RBP4 (Ab) as shown above the lanes: Lane 1 received protein marker (Bio-Rad); lane 2 received tissue lysate.

